

# MADISON Comprehensive Facility Assessment

Madison, Connecticut

# Study Process To-Date



## First Workshop

March 9, 2015

“Listening”

## Second Workshop

May 11, 2015

“Options and Alternatives”

## Third Workshop

June 8, 2015

“Options and Alternatives II”

## Fourth Workshop

October 19, 2015

“Bd. of Ed. Recommendations ”

## Fifth Workshop

November 9, 2015

“Options Refinement”

## Sixth Workshop

December 8, 2015

“Community Q&A”

# School Utilization Study Options

Option Description:	PK	K	1	2	3	4	5	6	7	8	9-12	Order of Magnitude		Facilities Retired	MADISON Public Schools Comprehensive Assessment
												Rel. Cost	Cost*		
Maintenance Only "Do Nothing"															
6 School Option															
5 School Option															
4 School Option															

Reno as new project

New building

Order of Magnitude

Rel. Cost

Cost\*

Facilities Retired


MADISON  
Public  
Schools  
Comprehensive  
Assessment

Options  
Summary

3/30/2016

DRAFT

Drummey, Rosane,  
Anderson, Inc.

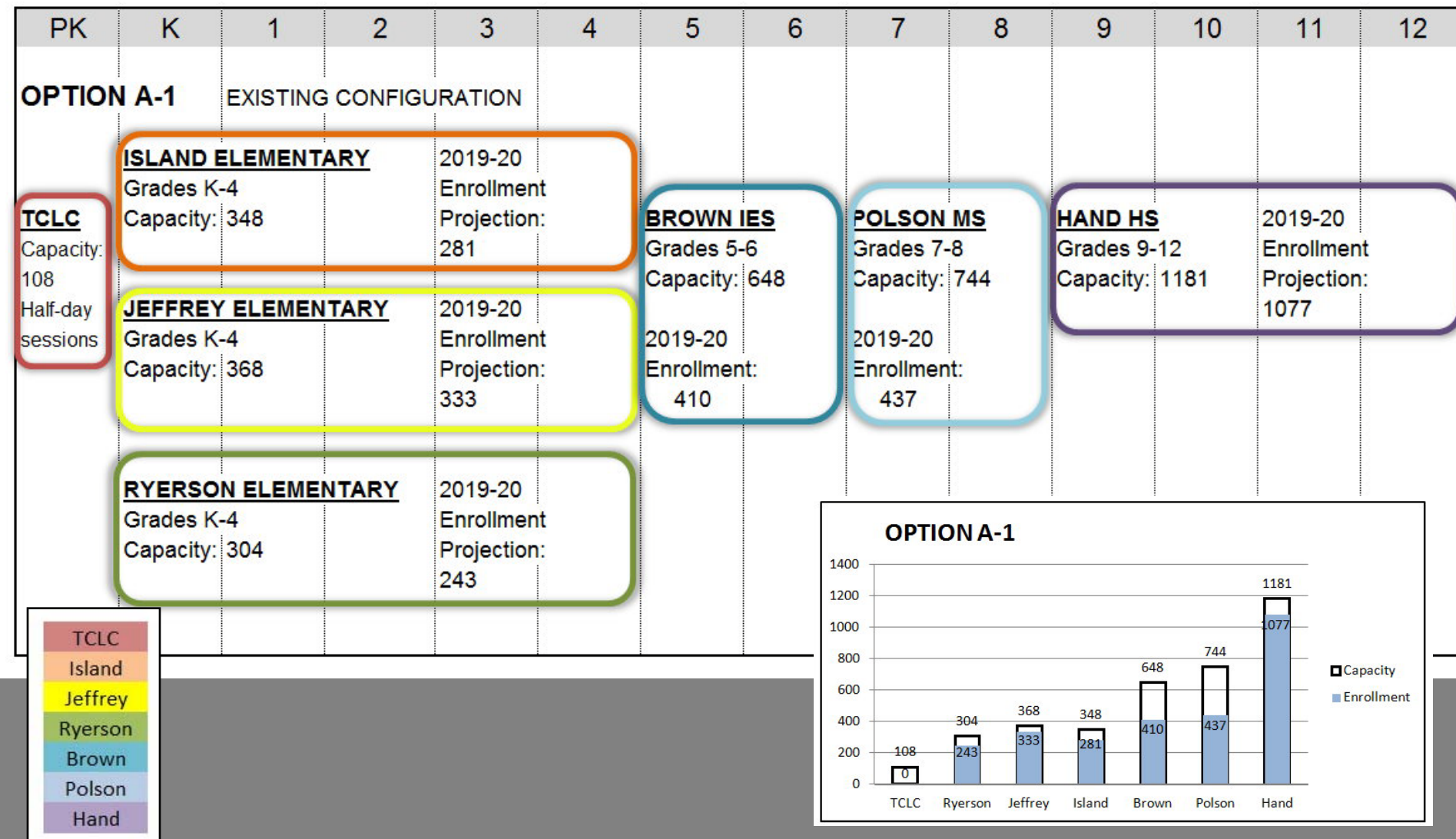


**\*NOTE:** Millions of dollars, after estimated reimbursement. **Not a budget number.** Costs are likely to change as design decisions are made, but these relative costs are valid to compare between options.

# Bubble Chart

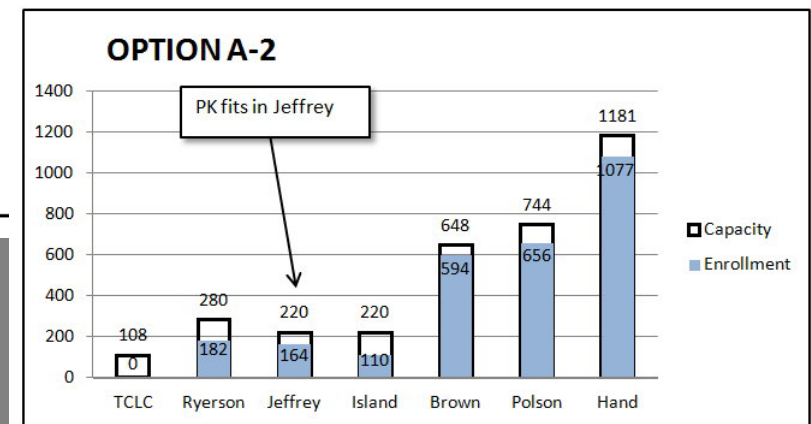
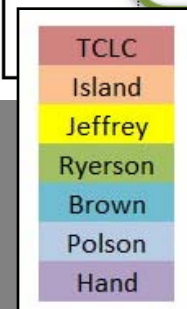
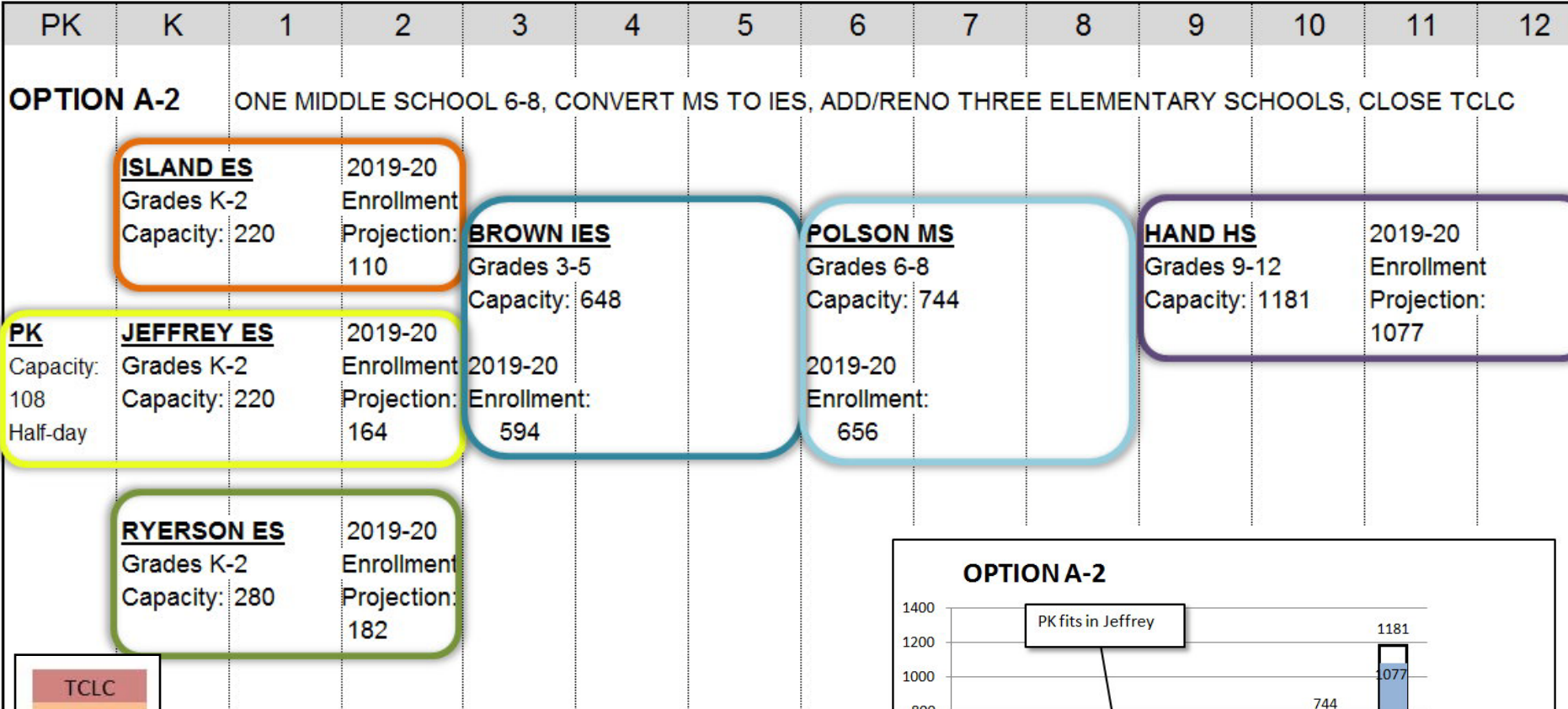
# Do Nothing

Maintenance Only, Existing Configuration



# Bubble Chart

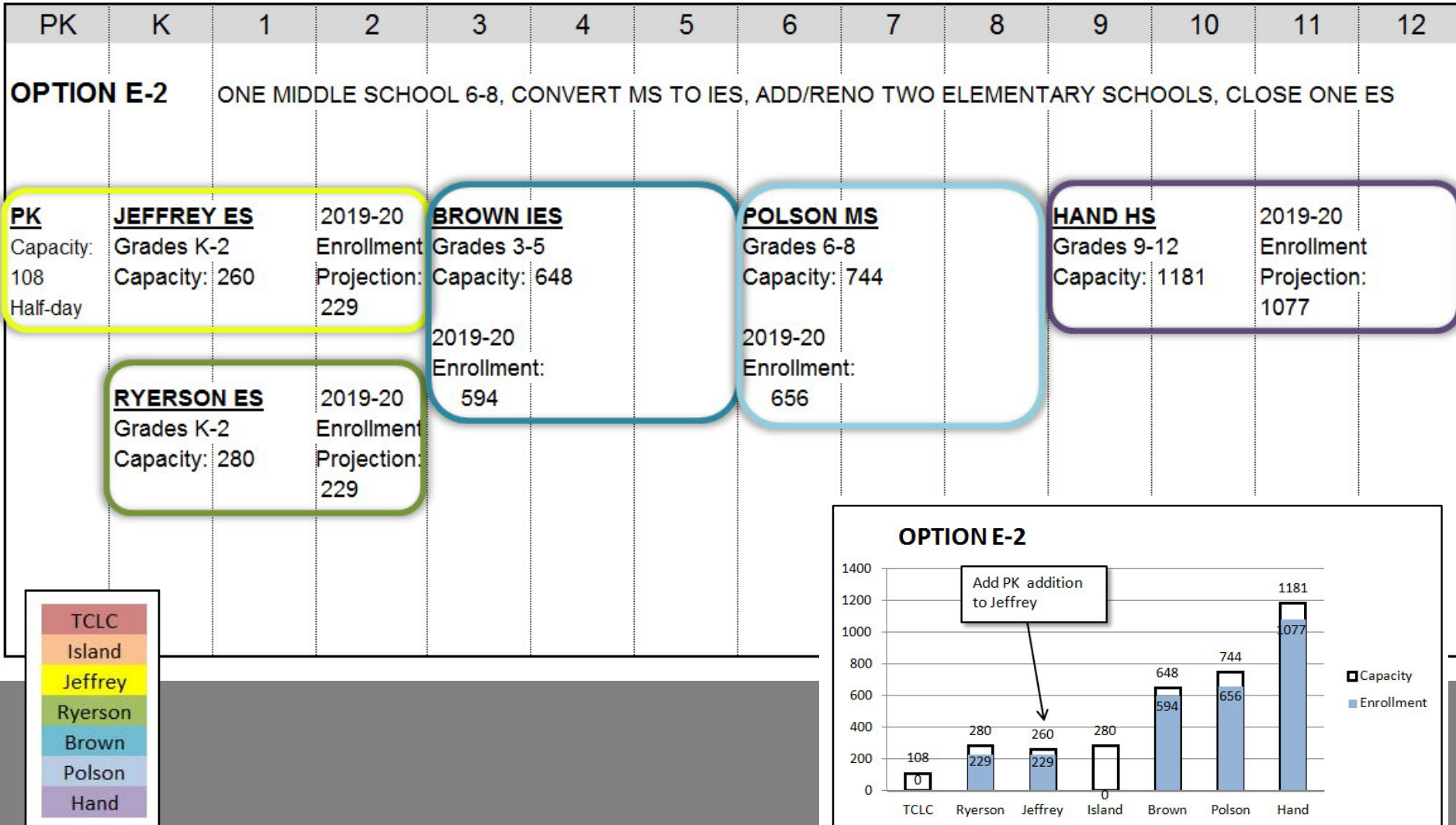
## 6 School Option





# Bubble Chart

## 5 School Option



# Bubble Chart

## 4 School Option

PK K 1 2 3 4 5 6 7 8 9 10 11 12

NEW ELEMENTARY SCHOOL PK-2, TWO MS WITH 3 GRADES EACH

### PK

Capacity:  
108  
Half-day  
sessions

### NEW ES

Grades K-2  
Capacity: 480  
  
2019-20  
Enrollment  
456

### BROWN IES

Grades 3-5  
Capacity: 648  
  
2019-20  
Enrollment:  
594

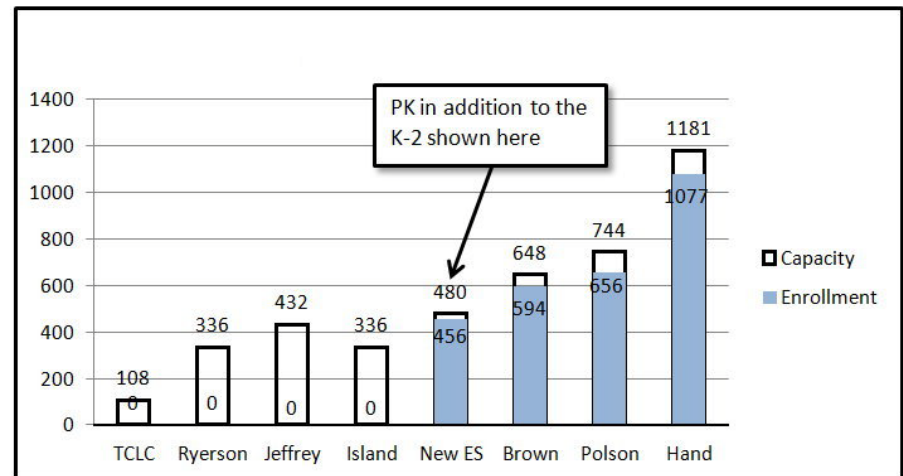
### POLSON MS

Grades 6-8  
Capacity: 744  
  
2019-20  
Enrollment:  
656

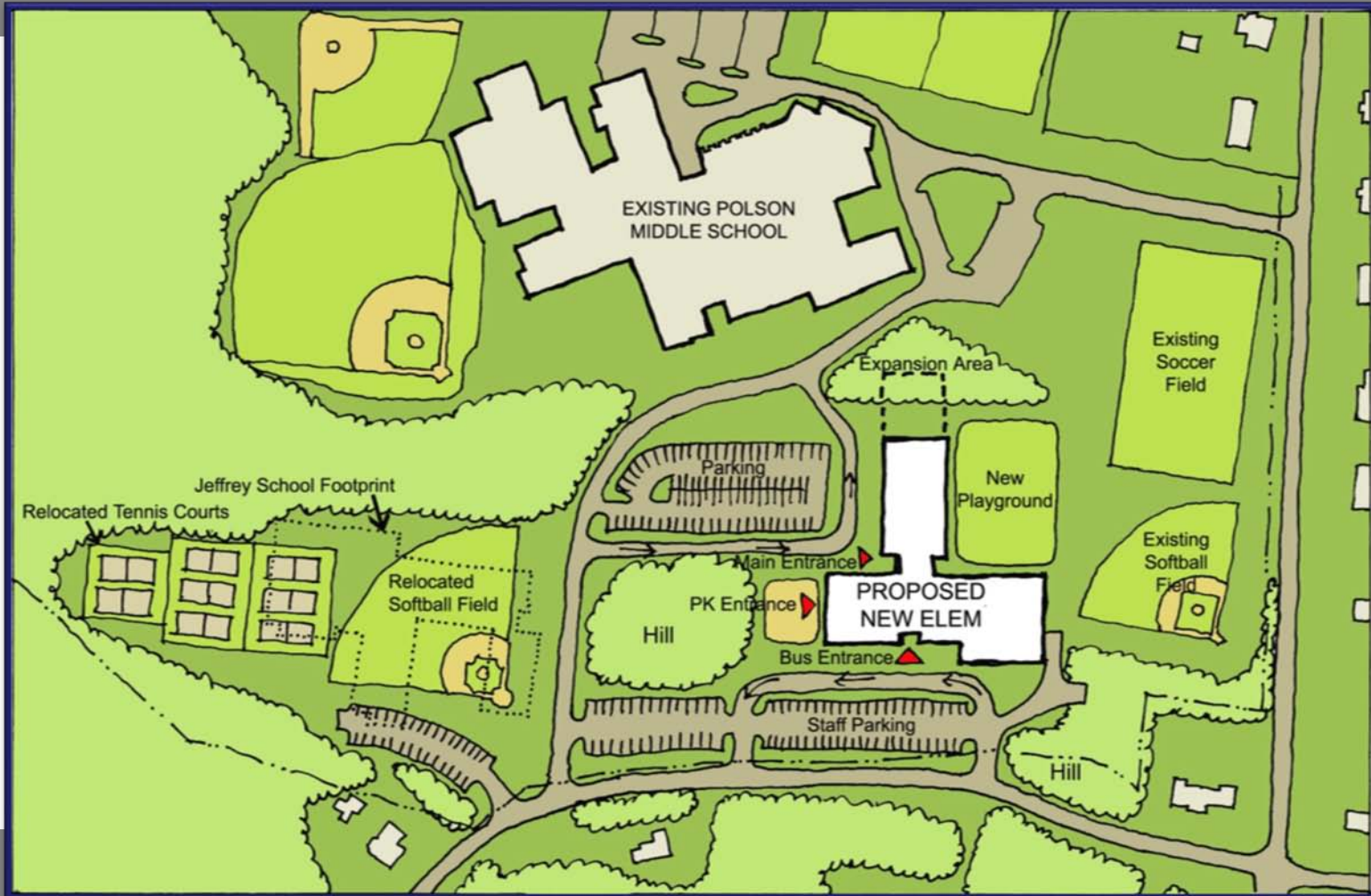
### HAND HS

Grades 9-12  
Capacity: 1181

2019-20  
Enrollment  
Projection:  
1077



# New Elementary School Test Fit 1



Site near Jeffrey

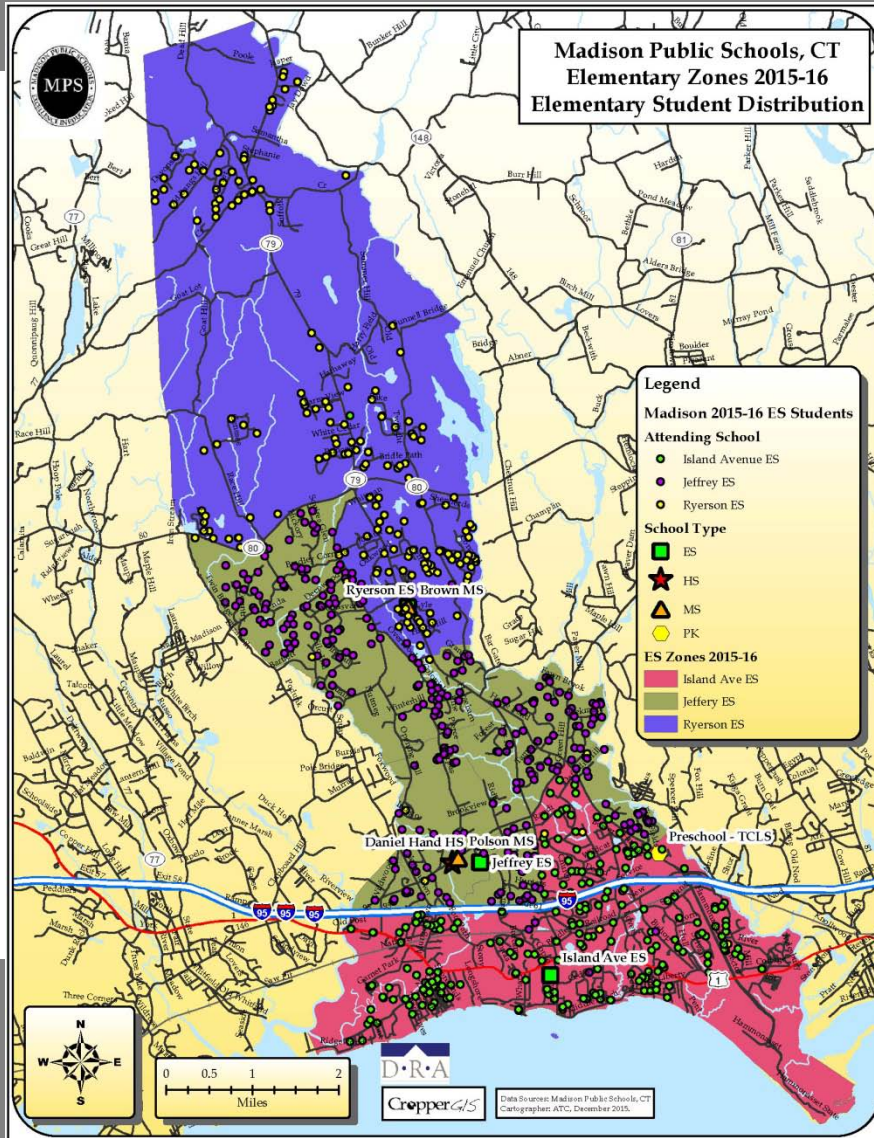


# New Elementary School Test Fit 2



Site near Ryerson

# GIS Mapping – Existing Students



## EXISTING STUDENT DISTRIBUTION MAP 2015-16

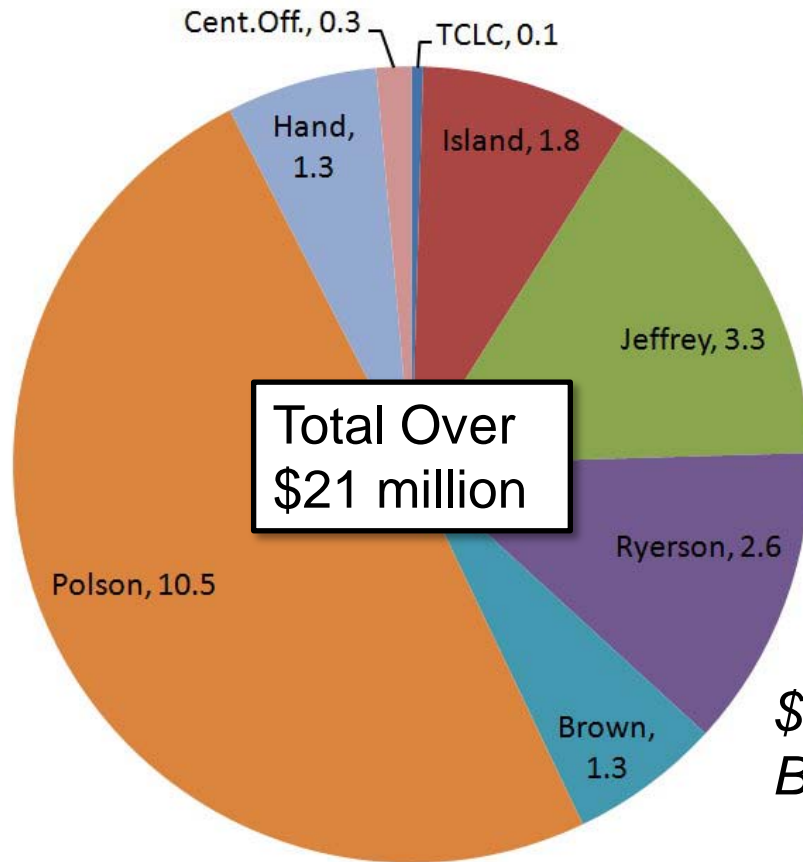
3 Districts for Elementary  
Schools shown in color

Ryerson

Jeffrey

Island Ave.

# CES Maintenance Costs



Mechanical, Electrical, and Plumbing maintenance costs over the next 10 years

*\$ millions*  
*Based on CES engineering reports*